

GL 4



DABEGAL[®]

PREFABBRICATI

Internet: <http://www.dabegal.it> e-mail: info@dabegal.it

GL 4

CARATTERISTICHE TECNICHE:

BASAMENTO: intelaiatura in profilati d'acciaio, idonei al supporto delle pareti e del pavimento.

PAVIMENTO: formato da pannelli in truciolare idrofugo rivestito con linoleum PVC.

COPERTURA: struttura in profilati perimetrali, dotati di n. 4 piastre per il sollevamento del monoblocco, sostengono i pannelli di copertura incastrandosi con quelli di parete e facilitando lo scarico delle acque.

Copertura e controsoffittatura realizzata con pannelli sandwich, isolati con poliuretano, rivestiti all'esterno in lamiera zincata e all'interno in lamiera zincata preverniciata.

PARETI ESTERNE: formate da pannelli modulari sandwich, costituiti da due lamiere zincate preverniciate e isolate con poliuretano spessore 40 mm.

IMPIANTO ELETTRICO: eseguito secondo le norme vigenti, con distribuzione a vista dentro a tubi in PVC autoestinguenti.

SERRAMENTI: realizzati in profili in alluminio anodizzato argento - Finestre a diversi sistemi di apertura - Porte pannellate oppure vetrate parte alta - Possono essere corredati di diversi tipi di vetro, avvolgibili, inferriate, zanzariere e tende.

TECHNISCHE EIGENSCHAFTEN:

UNTERGESTELL: Gestell in Stahlprofilen, geeignet zur Wand- und Bodenstützung.

FUSSBODEN: bestehend aus wasserabstoßenden Spanplatten überzogen mit PVC-Linoleum.

DECKE: Struktur in Metallumfassungsprofilen, ausgestattet mit 4 Platten zur Anhebung des Monoblocks, ferner stützen sie die Deckenplatten, die sich mit den Wandplatten verkeilen und den Wasserablauf erleichtern. Decke und Hängedecke mit Sandwichplatten realisiert, die mit Polyurethan isoliert und außen mit verzinktem Blech und innen mit vorlackiertem Blech verkleidet sind.

AUSSENWÄNDE: bestehend aus modularen Sandwichplatten mit zwei vorlackierten verzinkten Blechen und isoliert mit 40 mm starkem Polyurethan.

ELEKTRISCHE ANLAGE: entsprechend der EG-Vorschriften ausgeführt mit sichtbarer Verteilung in selbstlöschenden PVC-Rohren.

DESCRIPTION TECHNIQUE:

SOCLE: structure en profilés d'acier adapté à supporter les cloisons et le plancher.

PLANCHER: formé de panneaux de bois aggloméré hydrofuge revêtu avec du linoléum PVC.

COUVERTURE: structure en profilés externes, dotés de 4 plaques pour le levage du monobloc. Le profilé supportent aussi les panneaux de couverture en s'encastant avec les panneaux muraux tout en facilitant l'évacuation de l'eau. Couverture et faux plafond en panneaux sandwich, isolation polyuréthane, revêtus à l'extérieur de tôle galvanisée et à l'intérieur de tôle galvanisée prévernée.

CLOISONS EXTERNES: formées de panneaux modulaires sandwich, constituées de deux tôles galvanisées prévernées et isolées avec du polyuréthane d'une épaisseur de 40 mm.

CIRCUIT ELECTRIQUE: conforme aux normes CEE avec installation apparente et conduites en PVC ignifuges.

HUISSERIE: réalisée en profilés d'aluminium anodisé argenté. Fenêtres avec différents systèmes d'ouverture - Porte en panneaux ou vitrée dans la partie supérieure - Elle peut être dotée de différents types de vitrage, volets roulants, barreaux, moustiquaires et rideaux.





TECHNICAL FEATURES:

BASE: framework in steel sections, suitable to support walls and the floor.

FLOOR: made in waterproof chipboard panels covered with PVC linoleum.

ROOFING: structure in perimeter sections, equipped with 4 plates to lift the unit; they also support the roofing panels, fitting together with those of the walls, and facilitate the drainage of water. Roofing and false ceiling made with polyurethane insulated sandwich panels, externally covered with galvanized sheet and internally with pre-painted galvanized sheet.


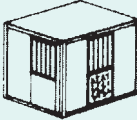
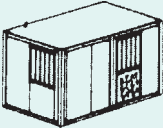
OUTSIDE WALLS: made with sandwich panels consisting of two pre-painted galvanized sheets, insulated with 40 mm thick polyurethane.

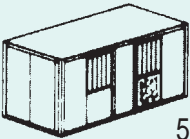
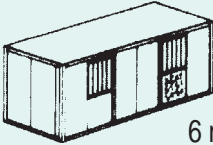
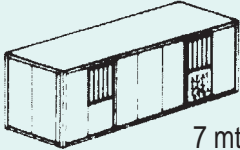
WIRING: surface wiring in accordance with EC standards, inside flame retardant PVC pipes.

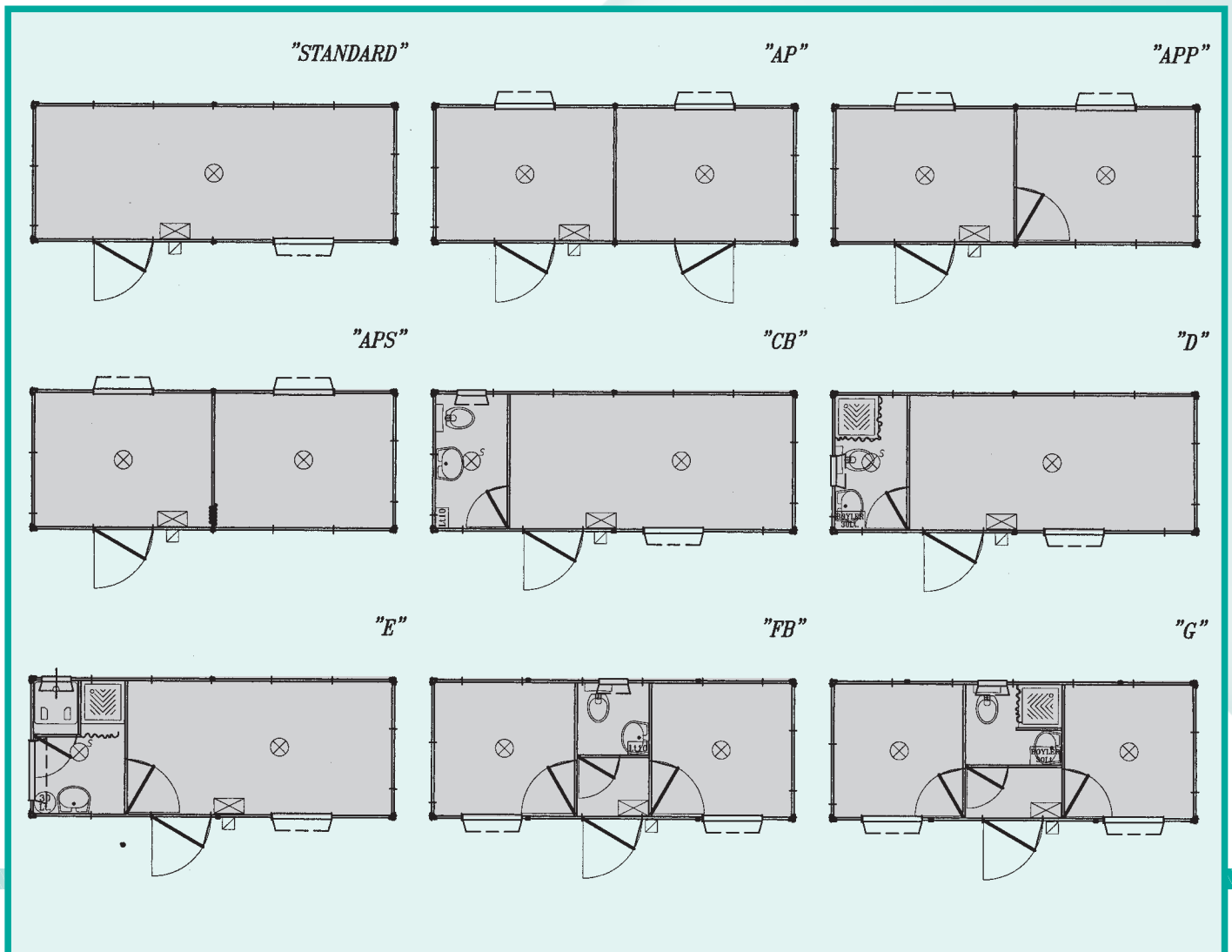
WINDOW AND DOOR FLAMES: made in aluminium anodized silver sections. The windows have different opening systems - Panelled doors or with grass at the top - They can have different types of glass, shutters, grates/bars, mosquito nets and curtains.



GL 4

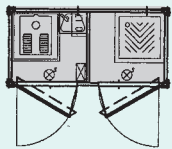
MODELLO STANDARD		LUNGHEZZA	LARGHEZZA	ALTEZZA		
 2 mt.	EST.	2130	2130	2450	2650	2950
	INT.	1950	1950	2200	2400	2700
 3 mt.	EST.	3130	2400	2450	2650	2950
	INT.	2950	2210	2200	2400	2700
 4 mt.	EST.	4130	2400	2450	2650	2950
	INT.	3950	2210	2200	2400	2700

MODELLO STANDARD		LUNGHEZZA	LARGHEZZA	ALTEZZA		
 5 mt.	EST.	5130	2400	2450	2650	2950
	INT.	4950	2210	2200	2400	2700
 6 mt.	EST.	6130	2400	2450	2650	2950
	INT.	5950	2210	2200	2400	2700
 7 mt.	EST.	7130	2400	2450	2650	2950
	INT.	6950	2210	2200	2400	2700

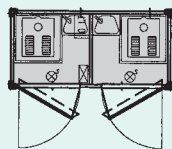




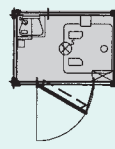
"CDTD 240"



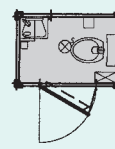
"CDAC"



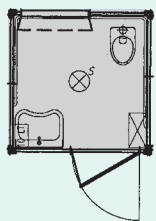
"CSAC TURCA"



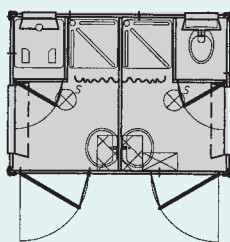
"CSAC VASO"



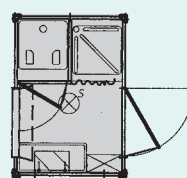
"SHB"



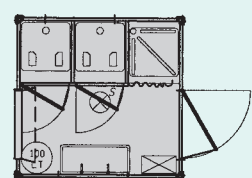
"SDU"



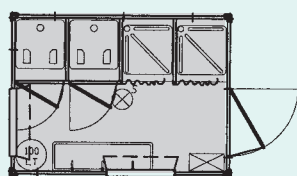
"S2"



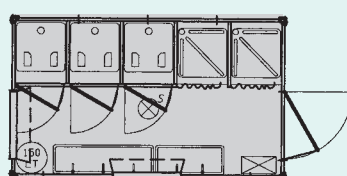
"S3"



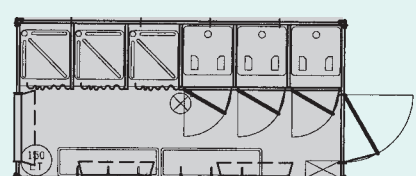
"S4"



"S5"



"S6"



GL 4



DABEGAL®
PREFABBRICATI



GRUPPO GAL



DABEGAL[®]
PREFABBRICATI

Via G. Leopardi, 1 - 42025 Cavriago (RE)
Tel. (0522) 37 26 11 - Fax (0522) 37 18 09
Internet: <http://www.dabegal.it> e-mail: info@dabegal.it

**AZIENDA CON SISTEMA QUALITÀ
CERTIFICATO DA DNV
UNI EN ISO 9001**